

St Lucie County Fire District "We Respond"



Fire plant fire smolders

ST. LUCIE — Firefighters continued to battle a fire seen here Sunday, at Florida Power & Light's recycling facility being monitored.

Brush fire threatens St. Lucie homes

Two brush fires scorched 80 acres

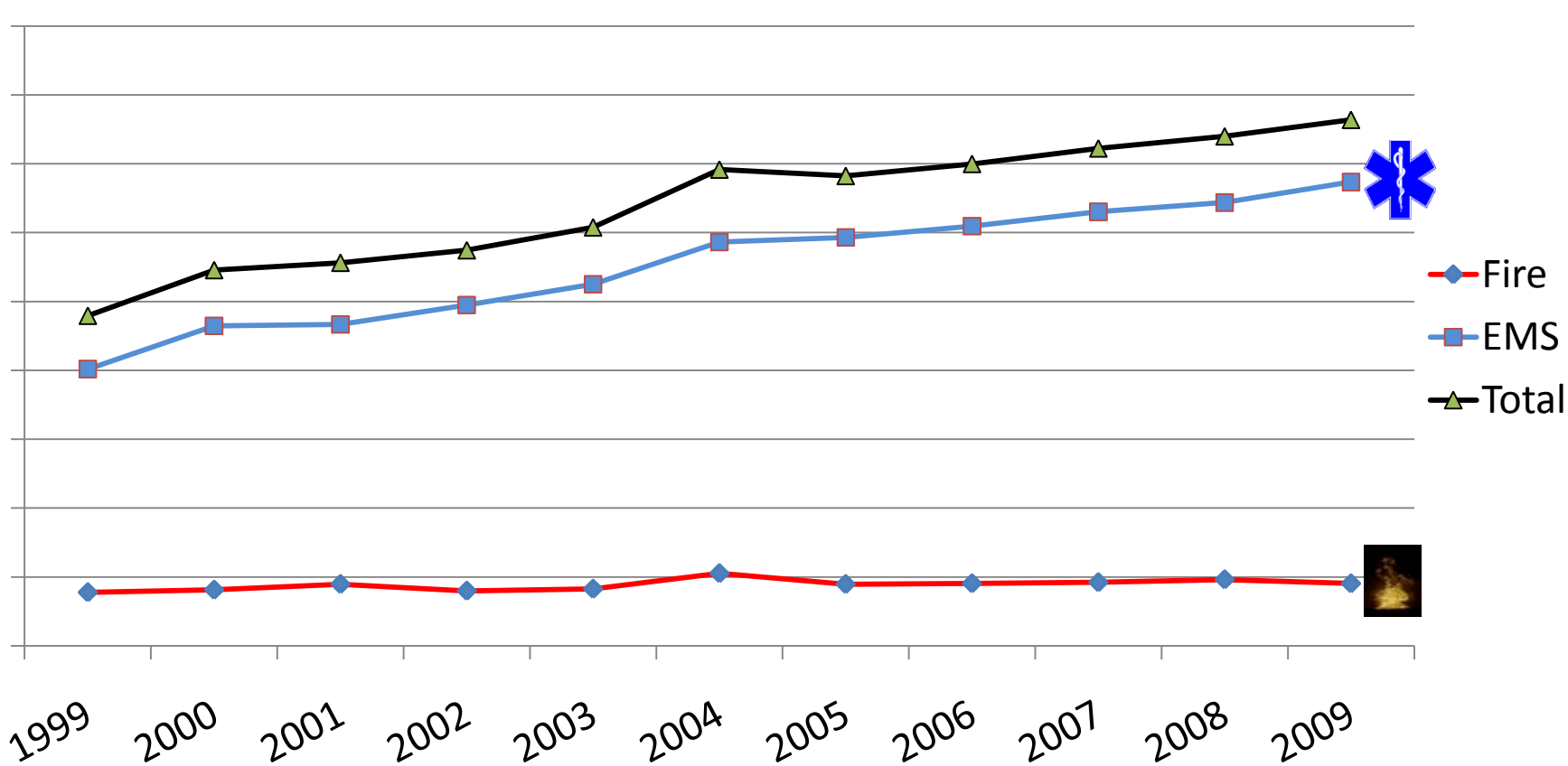
PORT ST. LUCIE — Firefighters worked to contain a brush fire in a rural area of St. Lucie County near the Martin County line. That blaze was contained, but firefighters are investigating what caused the fire, which consumed 80 acres.

Photographs by Ed J. Maitto
Design by Albert Garcia Jr., Florida University
Download & shared by Skies The Limit Graphics, PortStLucie



St Lucie County Fire District "We Respond"

1999 - 2009 Fire And EMS Call Volumes



St Lucie County Fire District Alarm Assignments

Structure Fire

- 3 Fire Engines
- 1 Rescue
- 1 Tanker
- 1 Battalion Chief
- 1 Field Training Officer

The goal of this response is to initially have a minimum of 14 personnel on scene at all fires. The first alarm will consist of the three closest engine companies.

The first due shall respond priority one with all personnel on the engine/quint, the 2nd and 3rd due shall respond priority 3, unless otherwise directed by the communications division

St Lucie County Fire District *Alarm Assignments*

Trauma is the leading cause of death among those under 44 years of age. More than 145,000 people die in the U.S. from traumatic injury each year. A Trauma Center saves lives and helps prevent permanent disability. **Time is of the essence and getting them there quickly is our job....**

The “**Golden Hour**” is a brief window of time in which the lives of a majority of critically injured trauma patients can be saved, if definitive treatment is provided.

The Golden Hour is 60 minutes from the moment of injury...the clock has already started **BEFORE** the call to 911...

Trauma Alert (132 patients since May 09)

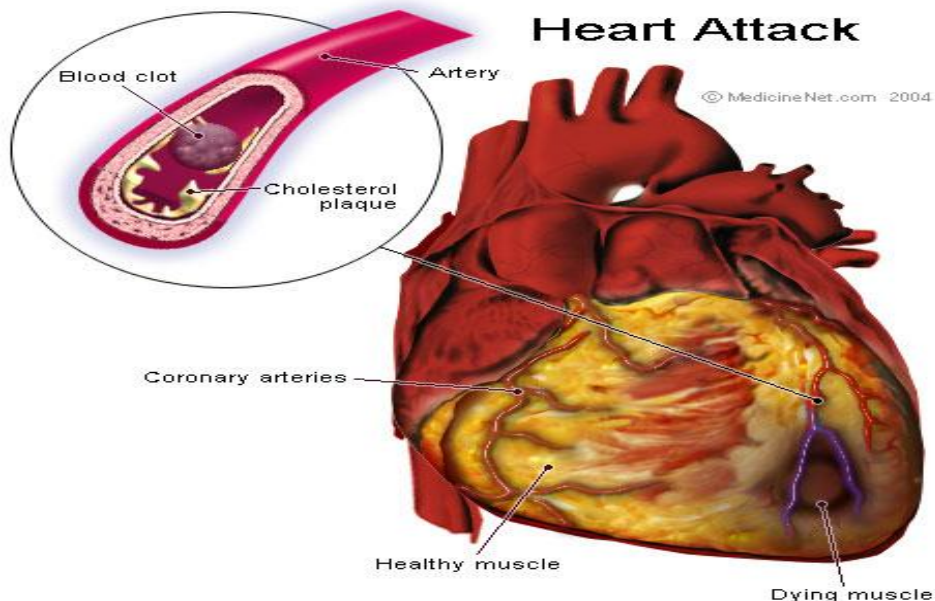
- 1 Rescue
- 1 Fire Engine
- 1 Battalion Chief
- 1 Field Training Officer (FTO)
- 1 Helicopter



St Lucie County Fire District Alarm Assignments

About every 20 seconds, somewhere a heart attack occurs. Some one **dies** from a heart attack every minute.

Rapid treatment and drug therapy are key to survival. **Our Paramedics can administer 33 cardiac medications to treat potential heart attack victims.**



Heart Attack 1,163 (2009)

- 1 Rescue
- 1 Fire Engine
- 1 FTO



Time is muscle...

American Heart Association



Learn and Live.

St Lucie County Fire District Alarm Assignments

Brush/Wild Fire – Task Force

- 1 Fire Engine
- 2 Brush Trucks
- 1 Tanker
- 1 Battalion Chief
- 1 Plow Unit - DOF

*“Freeze and frost conditions followed by periods of dry air may result in **red flag conditions** and fire weather watches”*

-DOF, 2010

Florida Department of Agriculture & Consumer Services
Division of
Forestry

Red flag conditions is a forecast that indicates conditions are ideal for wild land fire ignition and propagation; high fire danger with increased probability of a quickly spreading vegetation fire in the area within 24 hours.

St Lucie County Fire District Alarm Assignments

Brush/Wild Fire – Task Force

- 1 Fire Engine
- 2 Brush Trucks
- 1 Tanker
- 1 Battalion Chief
- 1 Plow Unit - DOF

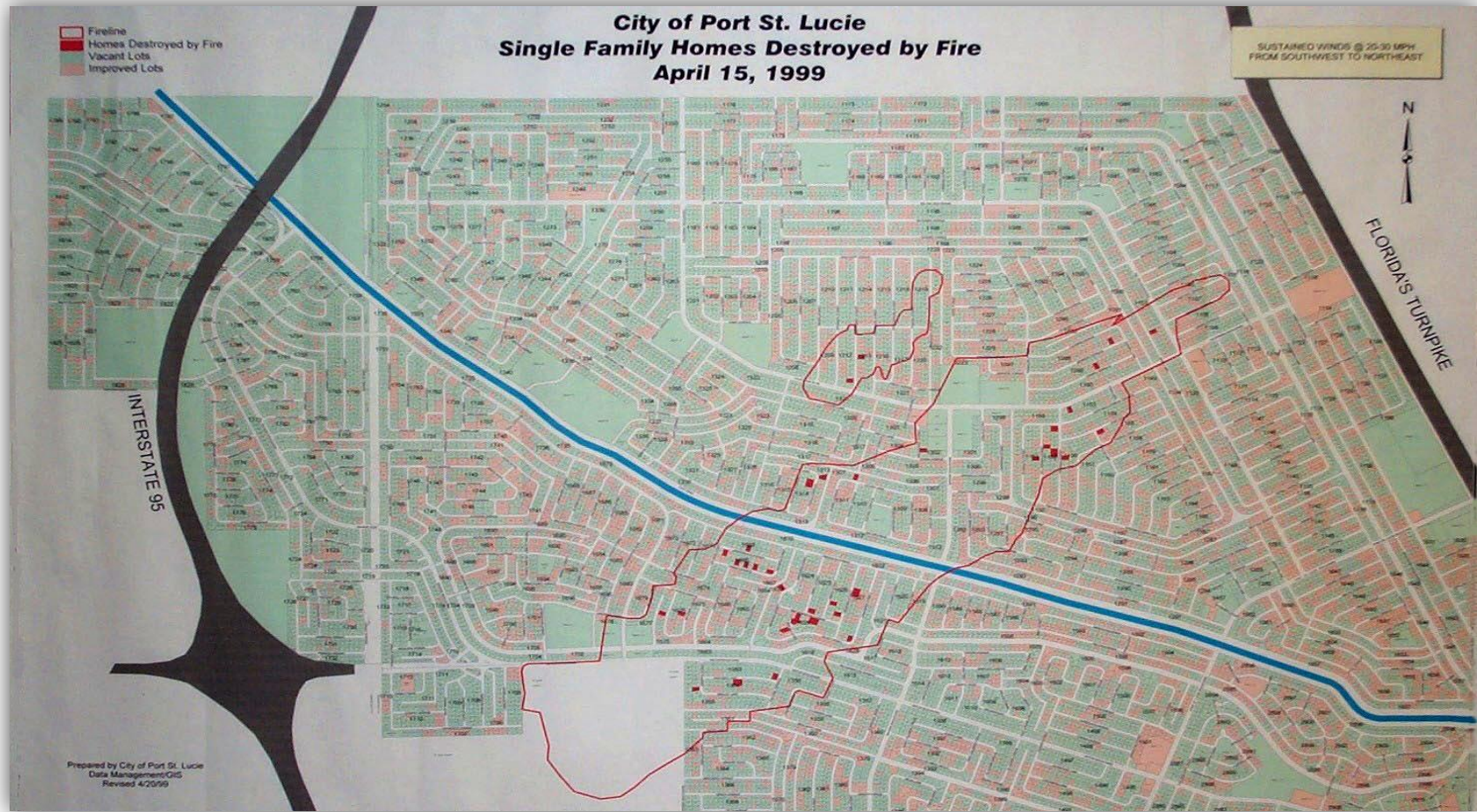
Port St. Lucie Wildfire

April 14-15, 1999

43 Single-family homes destroyed
67 homes damaged
10 miscellaneous structures damaged or destroyed
14 vehicles damaged or destroyed
700 acres burned
Total estimated damage: \$6.5 million (1999 dollars)

Multiple agencies from around the state responded to provide *mutual aid* in extinguishing this massive fire.

St Lucie County Fire District Alarm Assignments



St Lucie County Fire District *Alarm Assignments*

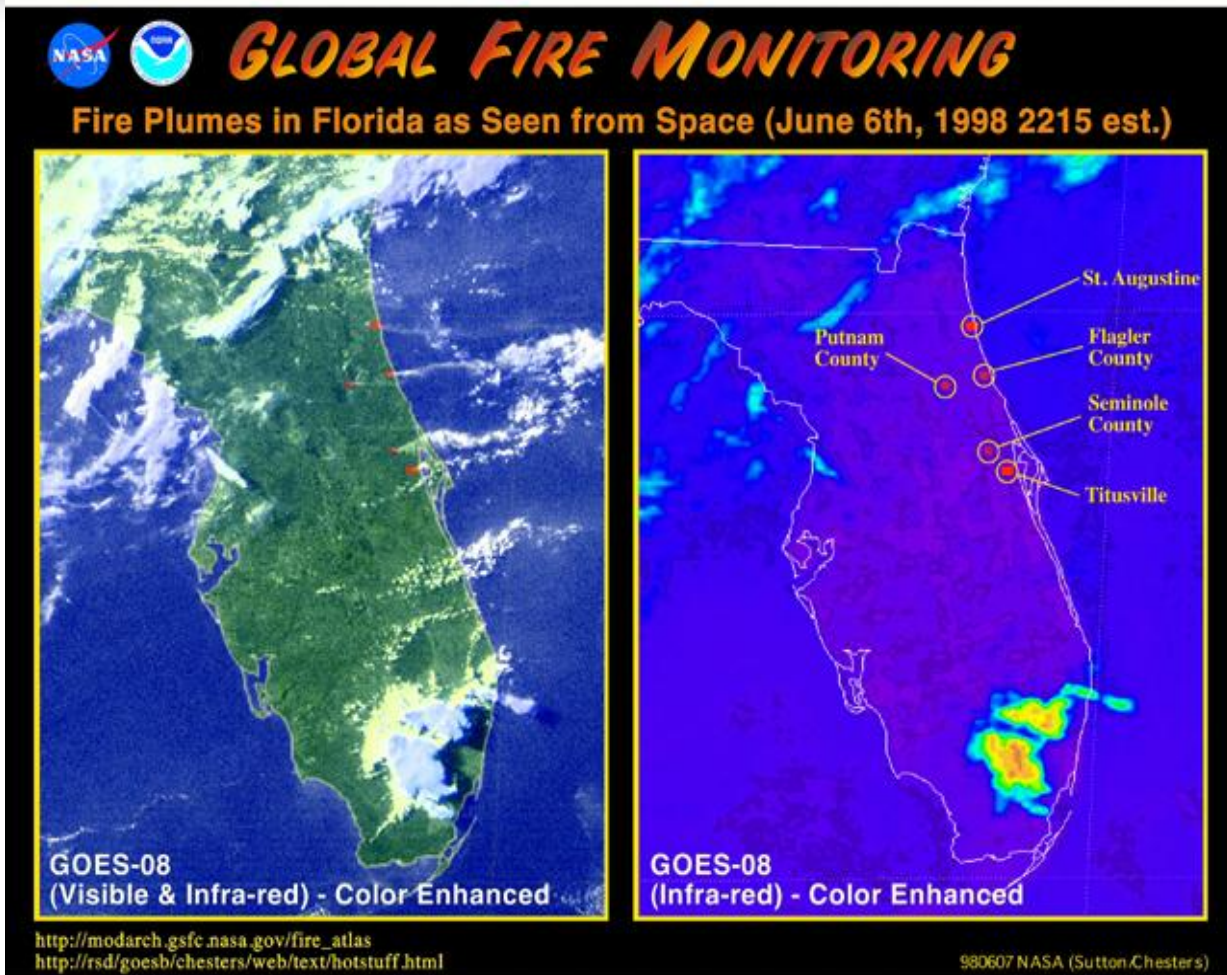
Brush/Wild Fire – Task Force

- 1 Fire Engine
- 2 Brush Trucks
- 1 Tanker
- 1 Battalion Chief
- 1 Plow Unit - DOF

1999 wildfire lessons

- Addition of Fire Hydrants
- Improvements in equipment
- lightweight gear vs. structural gear
- Addition of foam units
- thermal imaging (to locate hot spots)
- Improvements in the communication (dispatch) system
- **Task Force response to fires during dangerous weather conditions**

St Lucie County Fire District Alarm Assignments



"Daytona Fires" – June, 1998

According to DOF, 19,864 acres burned in Flagler County.

The Fire District provided *mutual aid* along side 13,000 firefighters and support personnel



St Lucie County Fire District Alarm Assignments

Brush/Wild Fire – Task Force

- 1 Fire Engine
- 2 Brush Trucks
- 1 Tanker
- 1 Battalion Chief
- 1 Plow Unit - DOF

Based on new requirements from the Division of Forestry (DOF), in order to provide mutual aid to another agency, the responding firefighters must hold a DOF Red Card.

St Lucie County Fire District Alarm Assignments

Brush/Wild Fire – Task Force

- 1 Fire Engine
- 2 Brush Trucks
- 1 Tanker
- 1 Battalion Chief
- 1 Plow Unit - DOF

DOF Red Card requirements

S-130 class

S-190 class

Practical field component

There are less than 1000 red card certified firefighters in the State

There is no guarantee that responding agencies will receive reimbursement

What does this mean?.....there may be no mutual aid when requested...